



# AAA PRESETS

FIND YOUR UNIQUE STYLE

# INSTALLING PRESETS IN LIGHTROOM (CC) — MAC OR WINDOWS

These instructions are for Adobe Lightroom 1.3 onwards.

- Extract the ZIP file (desktop version) with the presets that you downloaded from AAPresets.
- Open Lightroom CC and click on the edit icon at the top right. The icon looks like three
- sliders—three horizontal bars with circles on them.
- At the bottom on the screen, you will see a Presets button. Click this.
- The presets panel is now revealed.
- Click on the icon of three dots at the top ••
- In the dropdown menu select Import Presets.
- Navigate to the folder 'Lightroom and Lightroom Classic since Apr 2018 (.XMP)', select the presets ZIP file(s) and click Import.
- All of the presets will now be listed in the Presets panel.

# INSTALLING PRESETS IN LIGHTROOM MOBILE

- **Method 1: via Lightroom on desktop (using XMP presets)**

You must install the presets in the Lightroom desktop application (**not Lightroom Classic**) on your Windows or Mac computer first. Once they are installed, the presets will automatically sync to your mobile device via the cloud. See also: [Step-by-step guide by Adobe.](#)

- **Method 2: via Lightroom Mobile app**

Below you will find installation instructions on how to install Lightroom Presets in the free Lightroom Mobile app for Apple iOS and Android for which you do not need a paid version of Lightroom. However, this installation method is very time-consuming on iOS devices, and method 1 is clearly recommended if you have a Creative Cloud subscription.

# INSTALLATION GUIDE FOR LIGHTROOM

## MOBILE APP (ANDROID)

Please make sure you have the **latest version** of the app installed: [Download in Play Store](#)

- 01 / Download the .ZIP file starting with "**mobile-presets android...**" after your purchase on AAA Presets. You can also access your downloads by clicking on the "View Content" link in the confirmation email from AAA Presets.
- 02 / Open the Lightroom application on your phone and select an image from your library and press to open it.
- 03 / Slide the toolbar to the bottom to the right and press the "Presets" tab. Press the three dots to open the menu and select "Import Presets".
- 04 / Your file explorer appears on the screen. Navigate to the folder on your phone where you downloaded the .ZIP file and press the .ZIP file to import the presets. (If you cannot import the .ZIP file directly, use the "My Files" app on your phone to extract the contents of the .ZIP file first.)
- 05 / Your presets will now be imported and will be available under a new group in the "Presets" tab.

# INSTALLATION GUIDE FOR LIGHTROOM MOBILE

## APP (IPHONE).

**Please make sure you have the latest version of the app installed: [Download in App Store](#)**

1. Download the .ZIP file starting with "mobile-presets iPhone..." after your purchase on AAA Presets. You can also access your downloads by clicking on the "View Content" link in the confirmation email from AAA Presets.
2. Once the download is complete, press the download icon in the upper right corner of your screen to open the "Files" app on your phone. Press on the downloaded .ZIP file and the content will be extracted and a new folder should automatically appear. If you don't have a "Files" application installed, you can use a free app such as [iZip](#).
3. Open the Lightroom Mobile app on your iPhone. Click the "+" icon in your library and choose to create new "Folder". Name the new folder "Presets" and open the folder. Press "Create New Album" and name the album after the downloaded presets, plus "DNG" (e.g. "Darkly DNG").
4. Open the album and press the "Add" icon in order to add new images. Navigate to the folder you extracted from the downloaded .ZIP file and select all DNG files in the folder. When you have selected all, choose "Open".
5. Open the first DNG image and press the icon with the three dots to open the menu and select "Create Preset".
6. Name your preset after the preset pack (e.g. Darkly - 01). In "Preset Group", select "Create New Preset Group" and name it after the name of the preset pack. Uncheck "Tools", "Details", "Optics" and "Geometry". Under the "Light" tab uncheck "Exposure", and under the "Color" tab make sure to uncheck "White Balance". Press the tick to create the preset.
7. Follow the same method as in steps 5 and 6 to create your presets from the other DNG files.
8. When you are finished, you will now find the presets under the "Presets" panel.

# HOW TO INSTALL CAMERA RAW PRESETS IN PHOTOSHOP

Do you want to install and use Adobe Camera Raw (ACR) presets on your Windows or Mac computer? With the new .XMP format, Adobe now allows you to use presets directly in ACR (**version 10.3 or newer**)

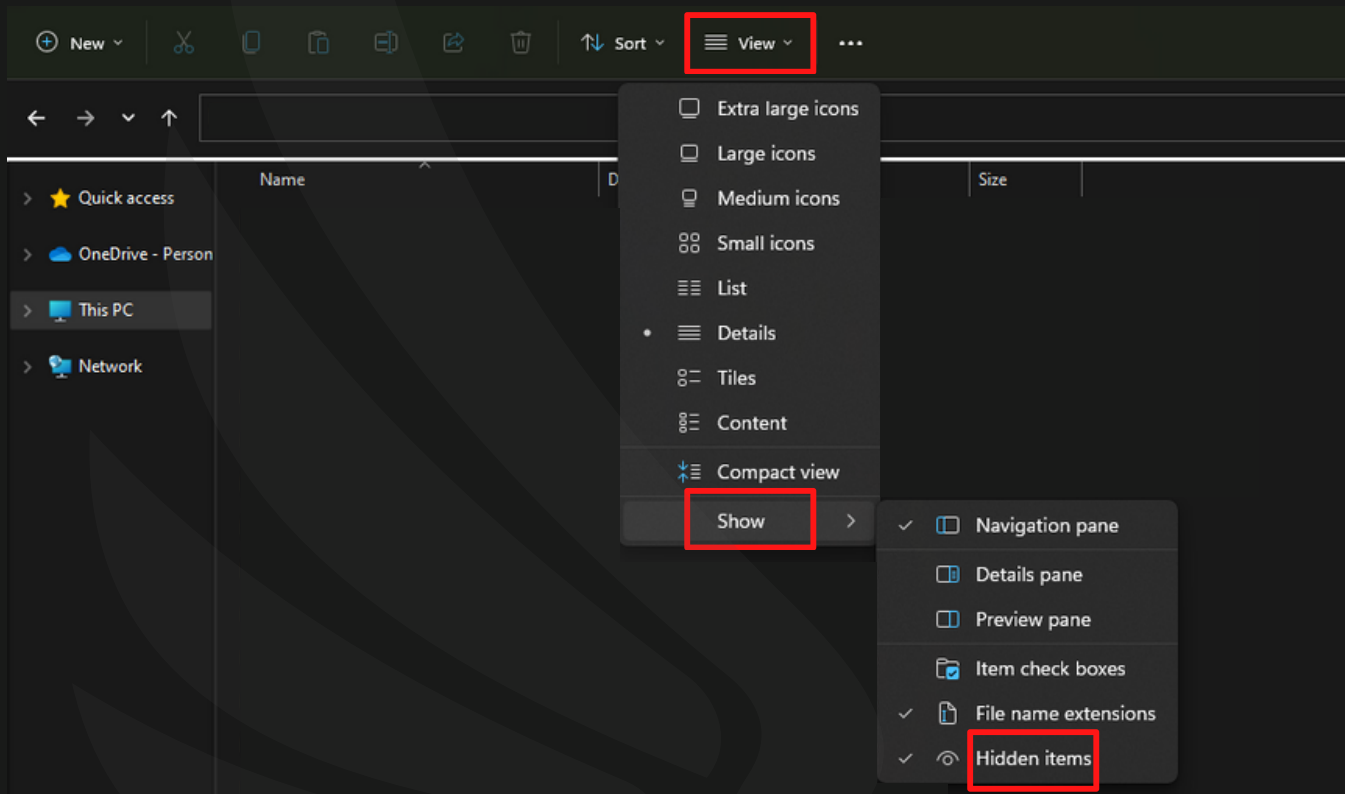
After downloading and unzipping Lightroom presets, you will notice that there are Two folders included: Two folders for Lightroom Classic (.XMP format) and Adobe Camera Raw (ACR). Presets for Adobe Photoshop in version 10.3 or newer. (.XMP format)



# INSTALLING PRESETS IN ADOBE CAMERA

## RAW 10.3+ (WINDOWS)

- Navigate to the following location on your computer (Tip: Remember to always tik hidden items button as shown below)



- Then go to this →  
"C:\Users\UserName\AppData\Roaming\Adobe\CameraRaw\Settings" and leave this window open.
- Go to the location where you unzipped your presets and open the **ACR presets folder**, usually named 'Photoshop - Adobe Camera Raw (ACR) Presets' Select the desired preset folder(s) containing the XMP file(s) and press **CTRL+C** to copy them
- Go back to the window where you opened the 'Settings' folder and hit **CTRL+V** to paste the folder(s) inside. Now you should have the folder(s) with the preset name (for example 'Darkly presets – Dark 1') inside the 'Settings' folder
- Start Photoshop and the presets are ready for use

# INSTALLING PRESETS IN ADOBE

## CAMERA RAW 10.3+ (MAC)

- Open a new Finder window and go to "**UserName** > Library > Application Support > Adobe > Camera Raw > Settings", and leave this window open. (If the 'Library' folder is not visible, you can access it by following the steps [in this Adobe article.](#))
- Go to the location where you unzipped your presets and open the ACR presets folder, usually named 'Photoshop - Adobe Camera Raw (ACR) Presets'
- Select the desired preset folder(s) containing the XMP file(s) and press **Command+C** to copy them
- Go back to the window where you opened the 'Settings' folder and hit **Command+V** to paste the folder(s) inside. Now you should have the folder(s) with the preset name (for example 'Darkly presets – Dark 1') inside the 'Settings' folder
- Start Photoshop and the presets are ready for use
- [Learn more about Adobe Camera Raw](#)



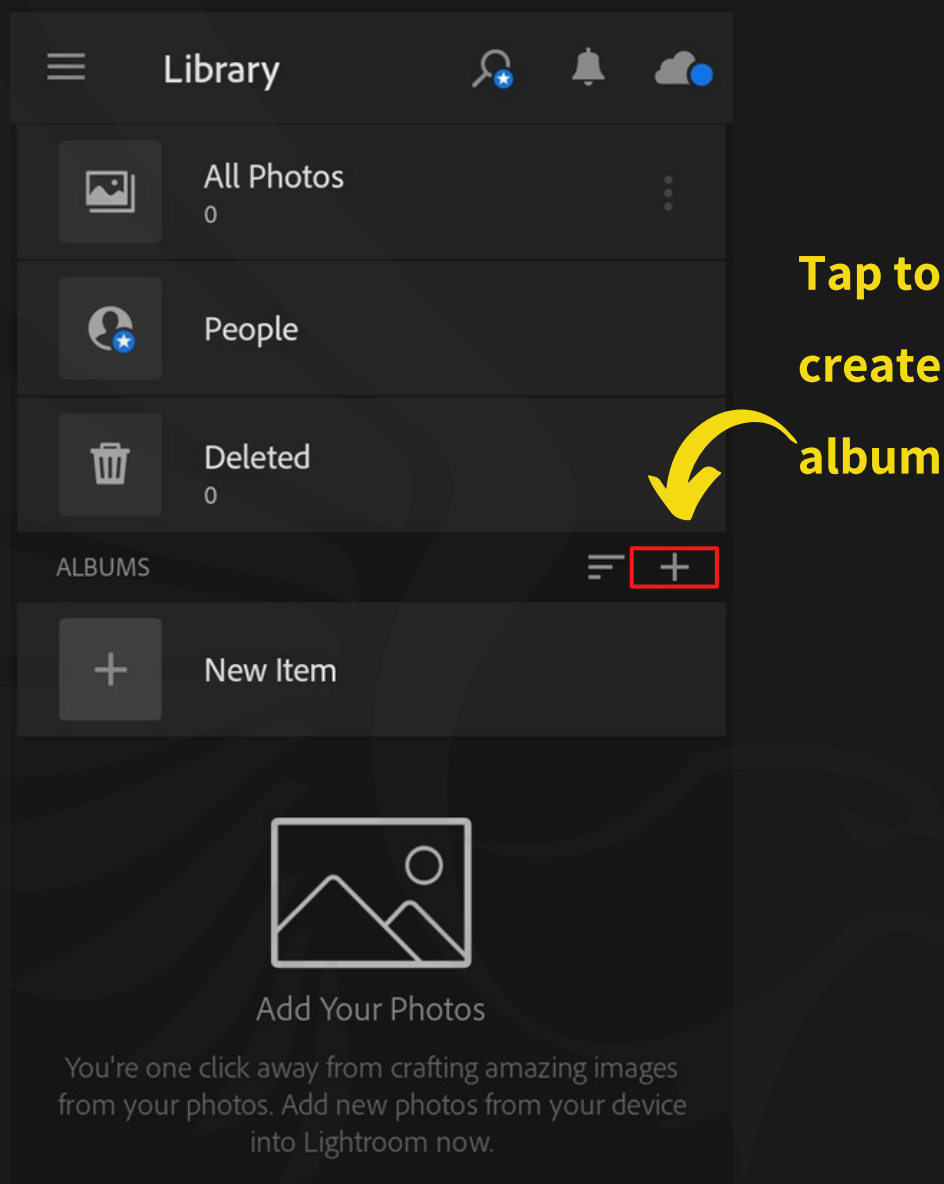
# **HOW TO USE DNG FILE ON YOUR PHONE**

## **1. Get DNG Files on Your Phone**

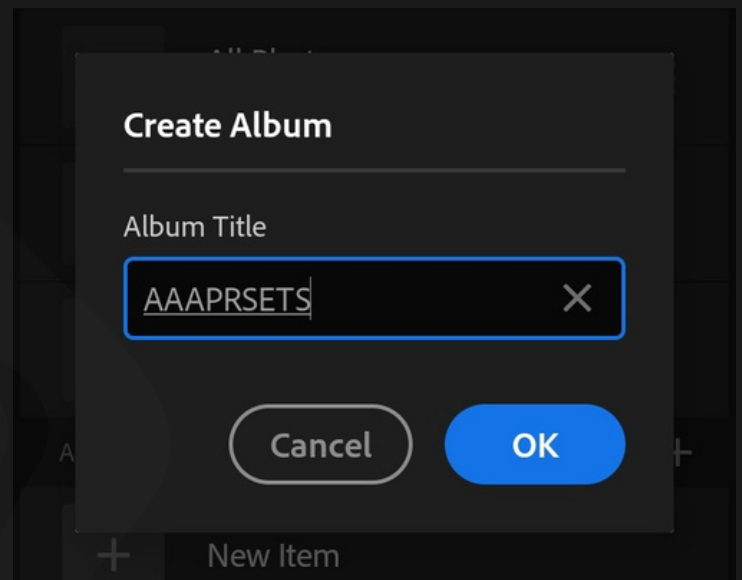
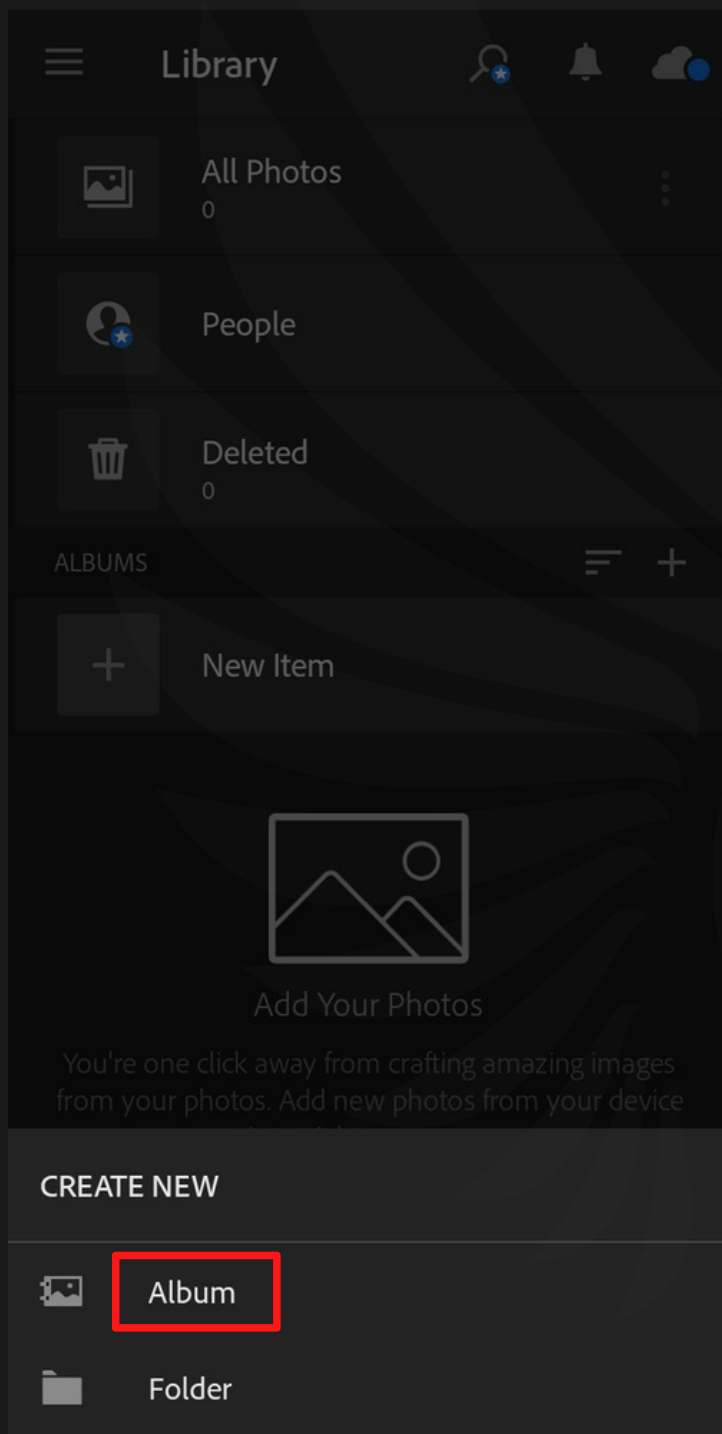
- When you purchase or download Lightroom presets, you'll either get the individual files or a zip file. If you receive them individually, simply open the email directly from your phone and save the presets files.
- If you've got the files already saved on your desktop computer, there are several ways to transfer presets to your phone.
- You can email the files to yourself to then open the email on your phone. You can use Dropbox to transfer presets files from your desktop. Or you can use AirDrop if you have the files saved on your desktop and you're a Mac user.
- Once you have the files on your phone, make note of where the files are saved. This way, you can easily find them later.
- If you receive a zip file, you can use an app such as iZip to unzip it on your cell phone. Of course, you can also unzip the file on your desktop and then use any of the above methods to send the files to your phone.

## 2. Import DNG files Into Lightroom Mobile

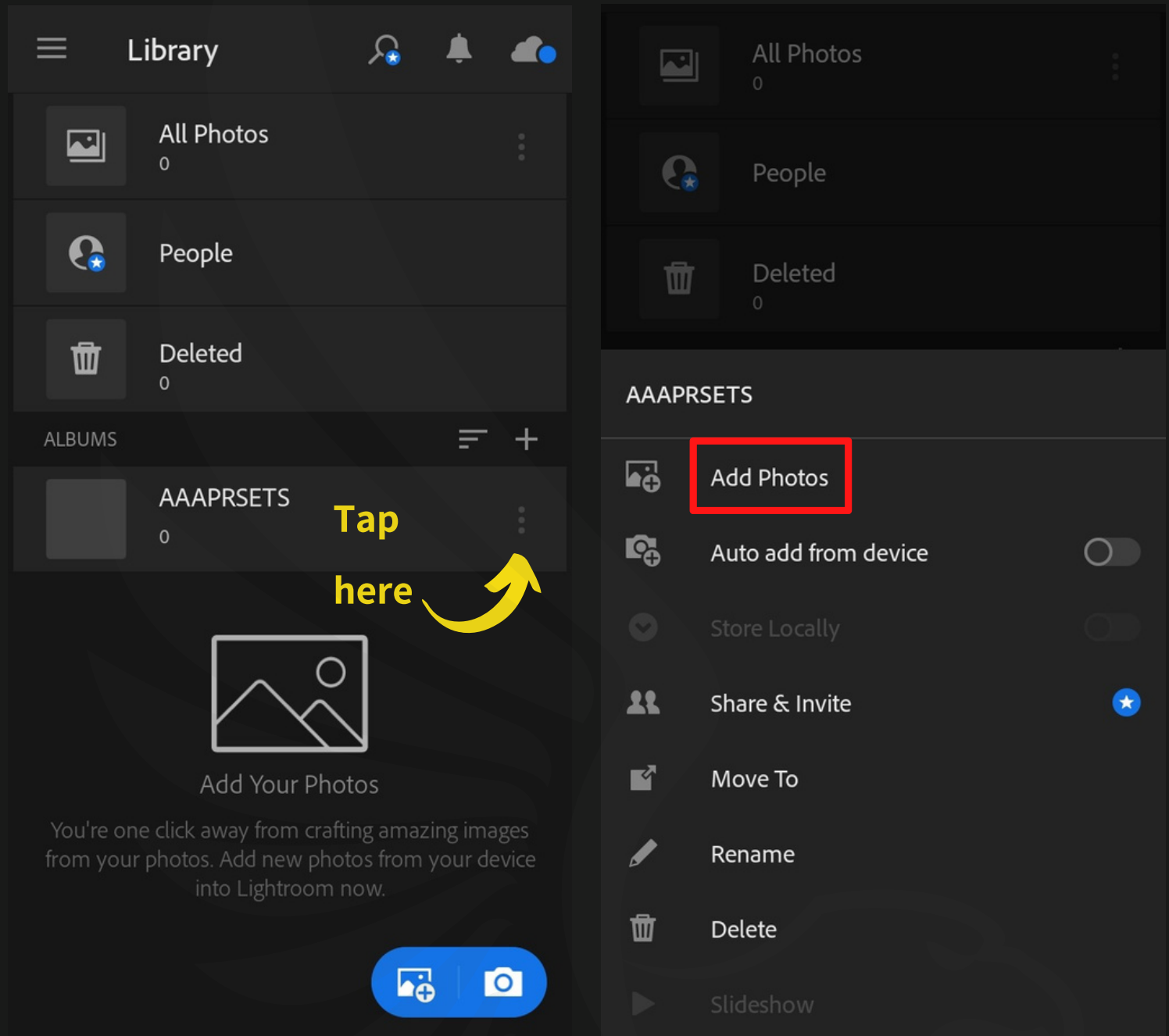
- The next step is to bring the DNG files into the Lightroom app!
- Open the Lightroom app and create a new album to house just your preset DNG files. To create the new album, tap the + to the right of the “Albums” section title. Then tap “Album” when it appears at the bottom. (as shown below)



- Once you have the Lightroom presets album created, tap the three dots to the right of the album name. Select “Add Photos”, and then select where your photos are saved.
- If you used iZip, you’ll select “From Files”. If you brought the files in individually, though, you’ll select “From Camera Roll”.



- After pressing the three dots on the new album, tap here to add photos



- Select the location of the DNG files.
- Next, select the DNG photo files to add and tap “Add”.
- Select the DNG files to add.



### 3. Save Presets

- You have the DNG files loaded into the Lightroom app, so let's go ahead and save those Lightroom presets! Open up one of the photos from your folder of DNGs.
- I recommend starting with the top left and going in order so you don't lose track.

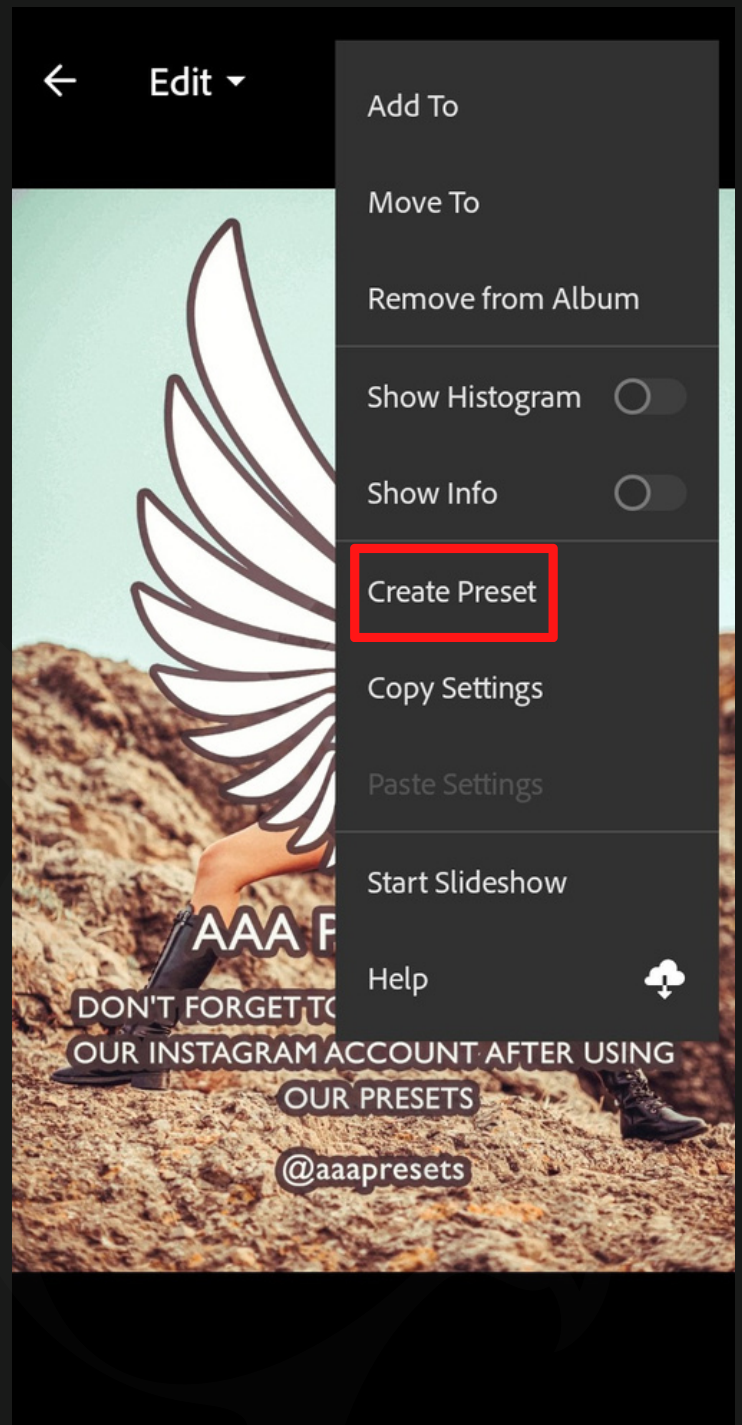


- Go into the album you created and select the first DNG file to open.
- With the DNG photo open, tap the three dots in the top right corner. When the options appear, select **“Create Preset”**.



Select the  
DNG file

Tap the  
three  
dots



- Once open, you can easily save the settings of the **DNG file** as a new preset!
- A list of options and checkboxes will appear. These let you select which settings you want to include in the presets. This screen is also where you name the preset and can create a separate folder for it.
- If you purchase presets from multiple sources, I recommend having a folder for each source.
- When you have selected everything, you want, tap the checkmark to save the new Lightroom presets. Next, repeat this process with each DNG file in the folder!
- Here you name, organize, and select settings for your new preset.

**New Preset**

Preset Name  
*BROWN 1*

Preset Group  
User Presets ▾

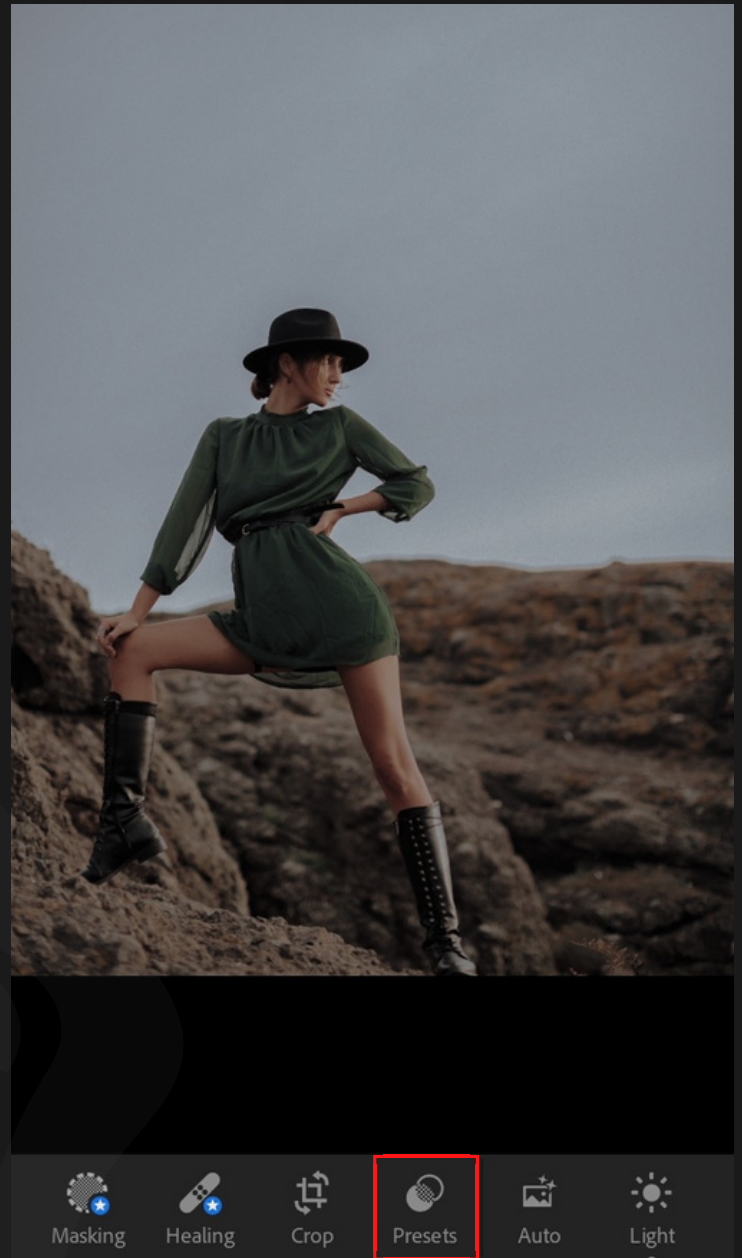
Select ▾

- ☒ Profile: Color 7/7 >
- ☐ Masking
- ☒ Light 5/5 >
- ☒ Color 5/5 >
- ☒ Effects 3/3 >
- ☒ Detail 2/3 >
- ☐ Optics



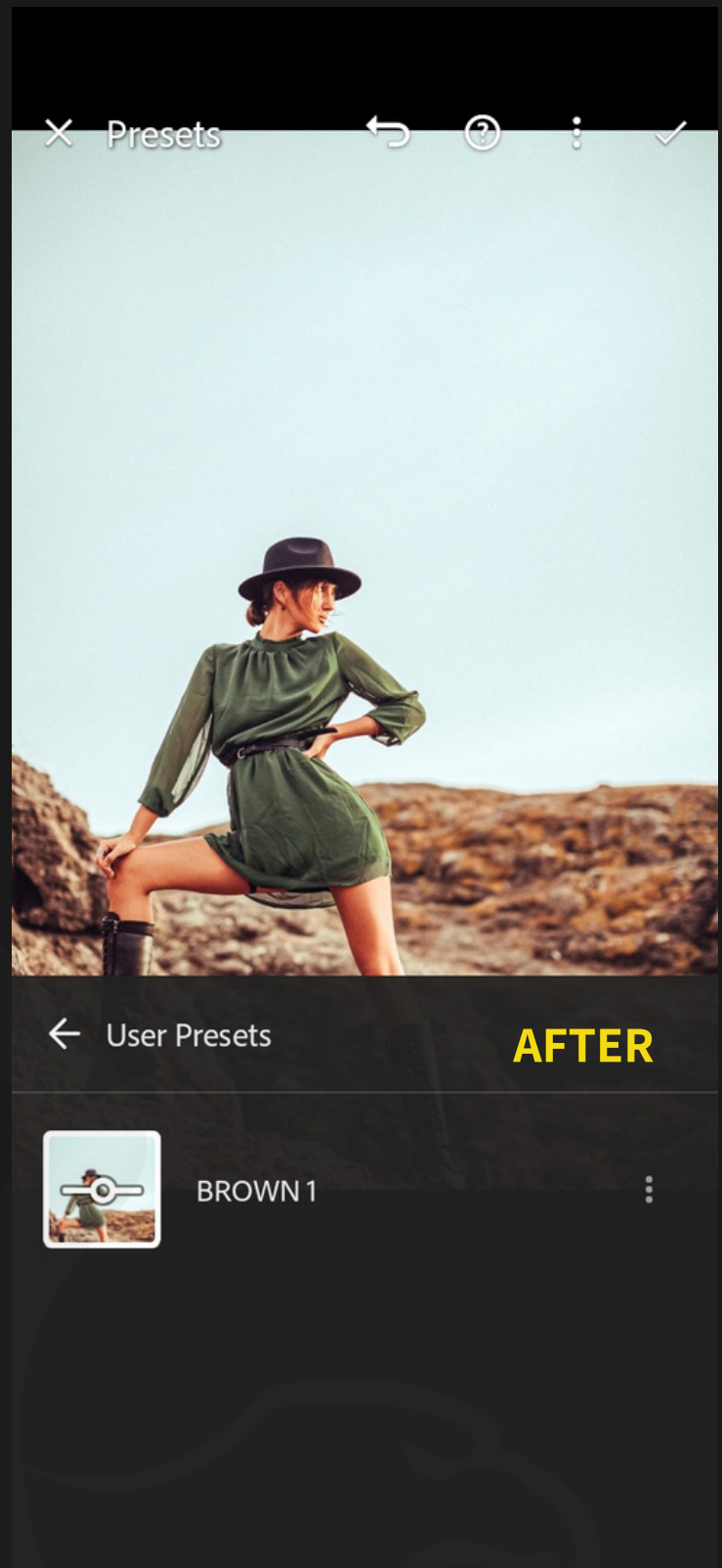
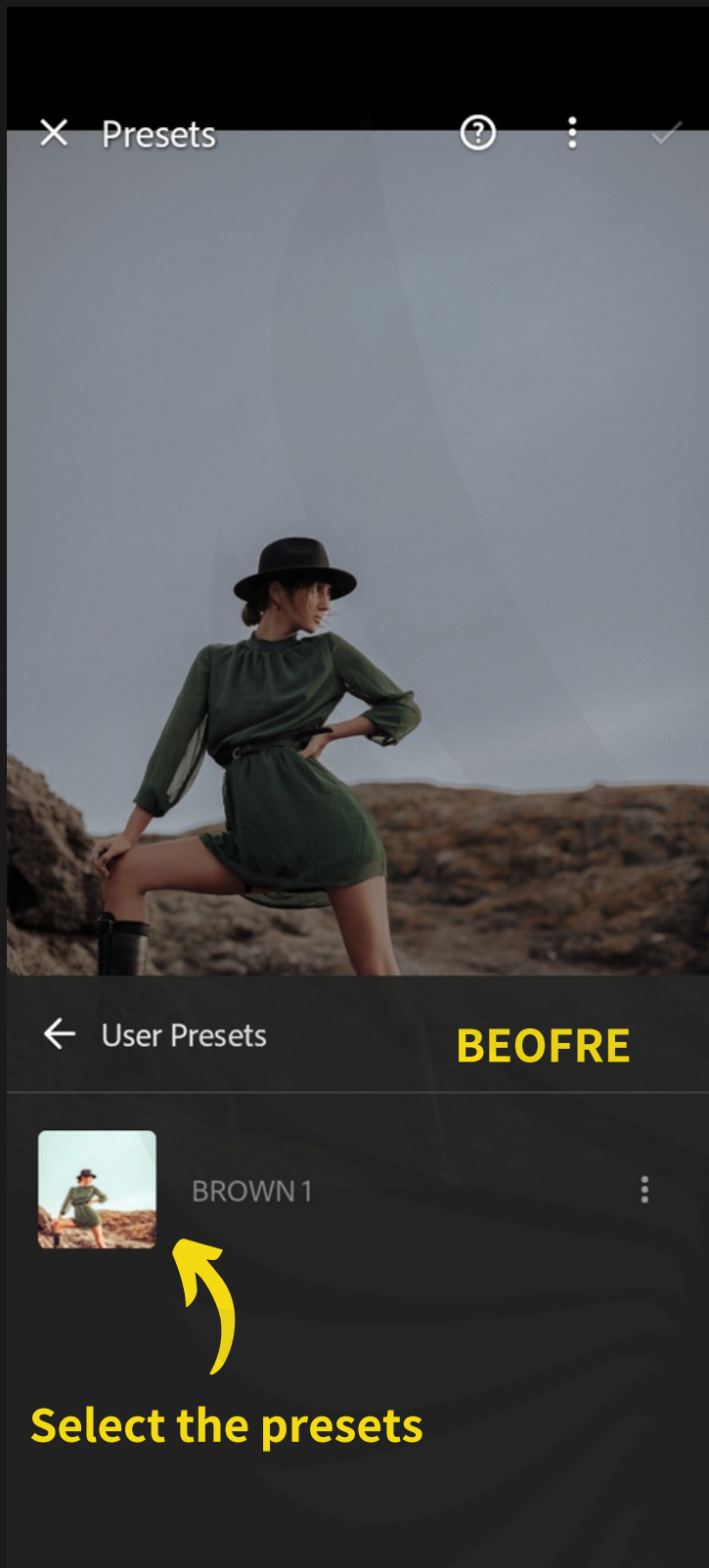
## 4. Use Lightroom Mobile Presets

- Now that you have the presets saved in the Lightroom app, it's very easy to use them. Open a photo that you want to edit.
- At the bottom of the screen, you'll see the sections with settings you can adjust. Scroll to the far right to reach the **"Presets"** section.
- The presets section at the bottom of the app screen houses all your saved Lightroom presets.



**Presets section**

- Tap into the Presets section, select the folder with the preset you want to use. Then tap the preset you'd like to apply. Lightroom even creates mini thumbnails showing a preview of that preset applied!
- When the preset is selected and you want to keep it, tap the checkmark to finalize.



- Some Minor Adjustments can be required like lighting condition changes from photograph to photograph, so that can be too done easily!

# FAQ

## **What Are Lightroom Presets?**

- The simplest way to think of them is like a filter that give your photos a professional and beautiful look in 1 easy click.
- They are called presets because they are made within Adobe Lightroom and are “pre” decided “setting” that can give your photos a certain look and feel.
- A preset is a lot of different actions — like adjusting colors, exposure, white balance, and saturation — all saved into one action, called a “preset”.
- The benefit of presets is they are much quicker than manually editing every photo, they create consistency in your photos, and anyone can use them—whether you’ve ever edited a photograph or not!

## **Why Choose Us?**

- Takes only a single click.
- High-quality result.
- Easily editable effects.
- Non-destructive Workflow.
- Completely experimented with & tested.

# FAQ

## Compatibility:

- Adobe Lightroom (Desktop & Mobile)
- Adobe Photoshop Camera Raw (**Version 10.3 or newer**)
- Compatible with both a Windows and Mac
- Work on RAW and JPEG images
- Can be easily adjusted to fit your image

## If you have any questions?

- Don't worry about it you can contact us any time.
- Our email address – [info@aaapresets.com](mailto:info@aaapresets.com)

**Follow us on social media for more details and  
new updates**



**[aaapresets.com](http://aaapresets.com) / [aaaluts.com](http://aaaluts.com)**